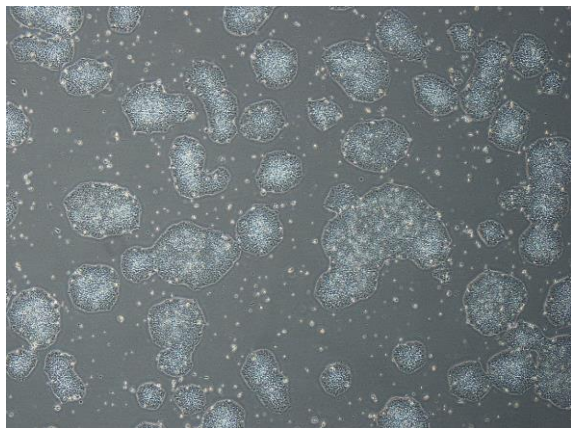
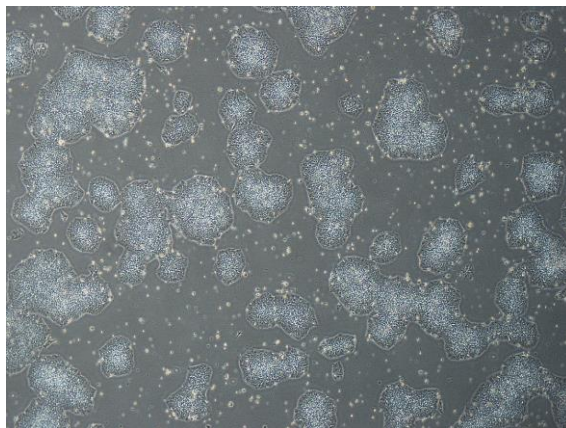


【 CiRA-j-1422 】 Morphology of iPSC colonies

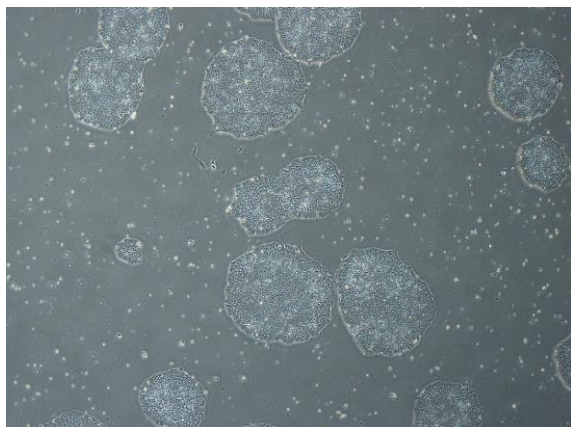
CiRA-j-1422-A: passage-3



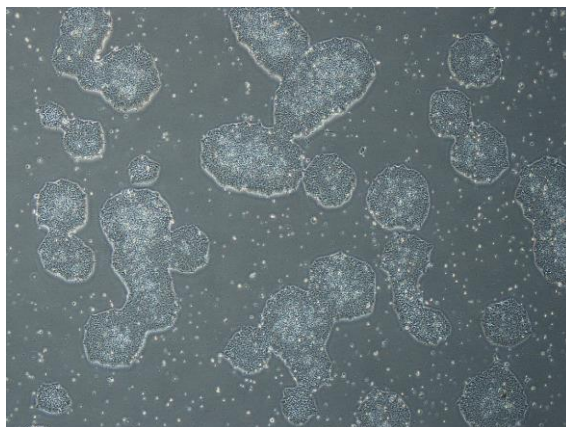
CiRA-j-1422-B: passage-3



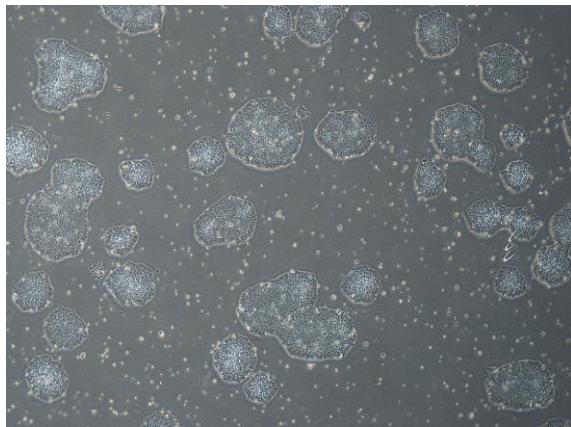
CiRA-j-1422-C: passage-3



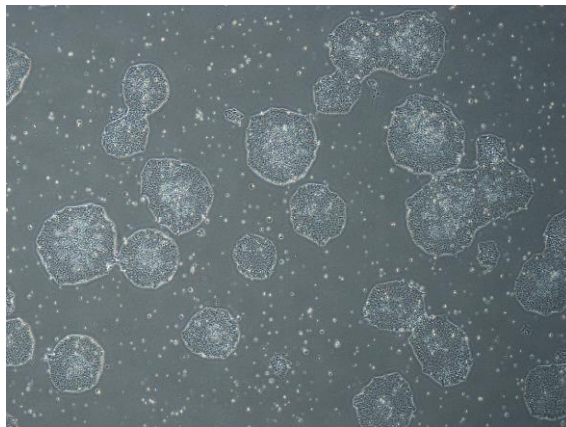
CiRA-j-1422-D: passage-3



CiRA-j-1422-E: passage-3



CiRA-j-1422-F: passage-3



(All images were captured at 4x magnification)